



## Print Audit 6 - How to Move Print Audit 6 and a SQL Server 2005 Express Database to a New Server

### Overview

This document includes the steps to move Print Audit 6 and a SQL Server 2005 Express database to a new server.

### Basic Steps

1. Install SQL Server 2005 Express on the new server.
2. Install Print Audit 6 on the new server without creating a new database.
3. Move the SQL Server 2005 Express database from the old server to the new server.
4. Reconfigure the Client workstations to point to the new server.

### Step #1 – Install SQL Server 2005 Express on the new server

Follow the instructions in the link below to install SQL Server 2005 Express for Print Audit 6. The instructions include the steps to install Print Audit 6, refer to the notes below for Step #2 before proceeding with the installation.

[Print Audit 6 SQL Server 2005 Express Installation Guide](#)

### Step #2 – Install Print Audit 6 on the new server without creating a new database

Refer to the instructions included in the document above to complete the installation. The only difference when you are installing Print Audit 6 on the new server is that you do not want to create a new database in Step #14.

NOTE: Ensure that you download the most recent version of Print Audit 6 from the link below:

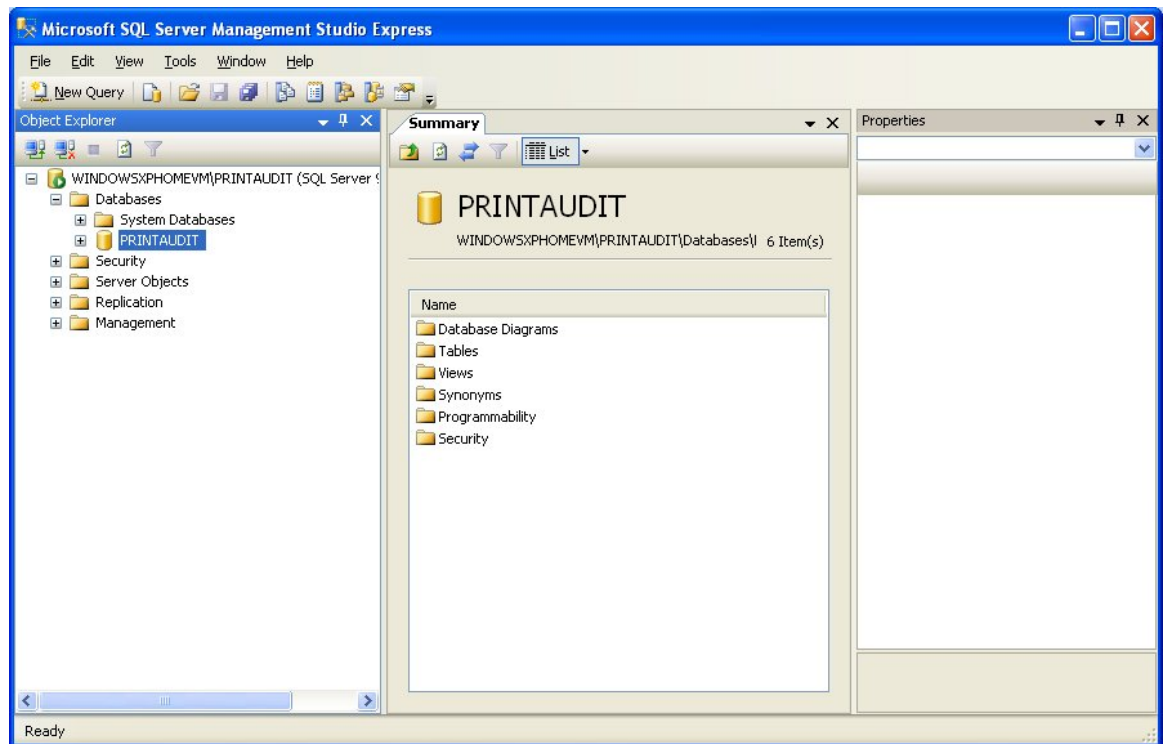
[Print Audit 6 Free Trial Download](#)



### Step #3 – Move the SQL Server 2005 Express database from the old server to the new server

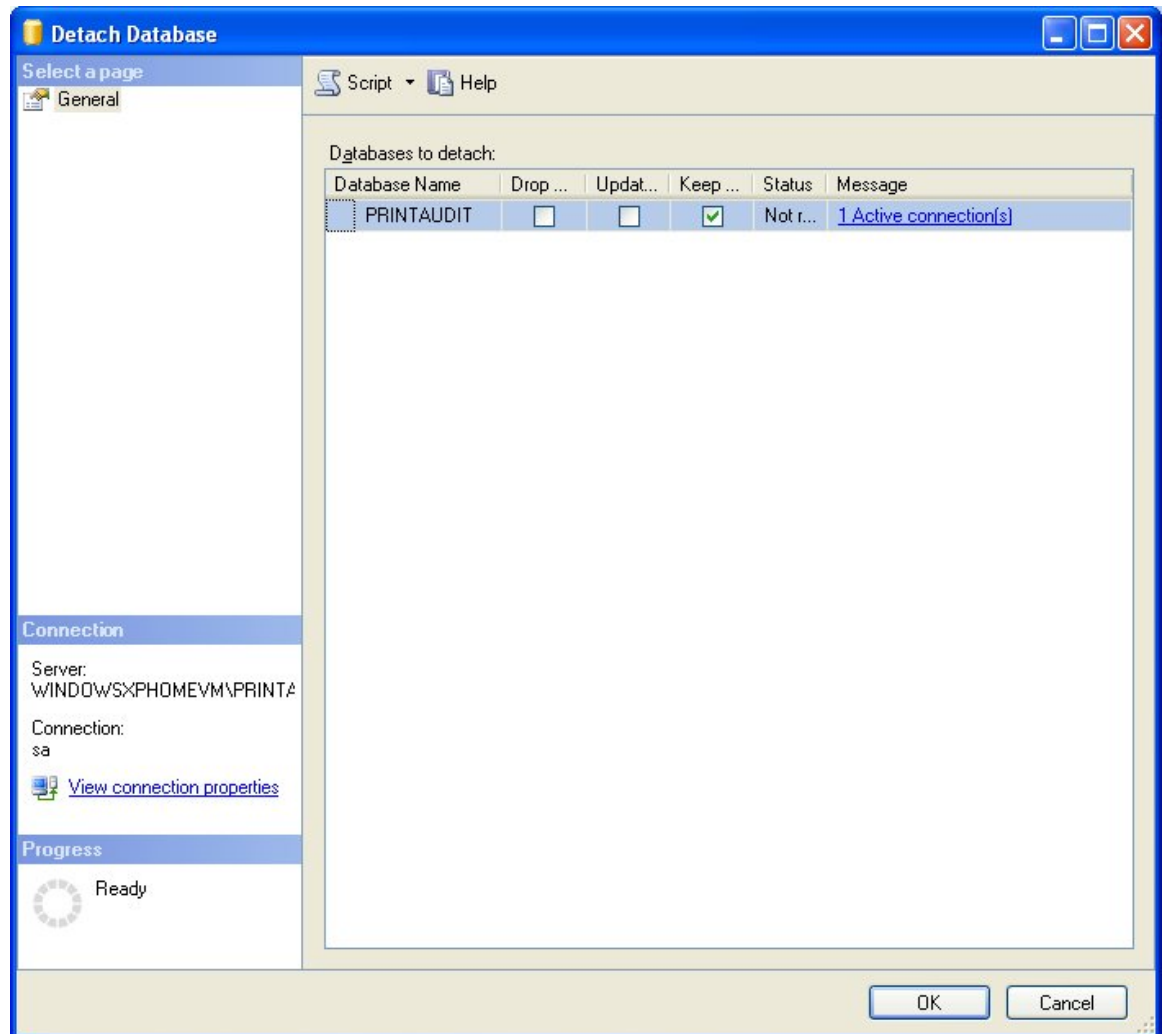
Use the following instructions to detach the database from the old server, move the files to the new server and then attach the database on the new server.

1. Stop the Database Communicator on this computer by going to the services or by right clicking the icon in the system tray.
2. To detach a database from SQL Server 2005 Express:
  - a. Open the Microsoft SQL Server Management Studio Express program (the link to install this program is included in the SQL Server 2005 Express Installation instructions above)
  - b. Click the plus sign on Databases on the left side and locate the database. The database is 'SQLEXPRESS' by default, the database in the example below is 'PRINTAUDIT'.





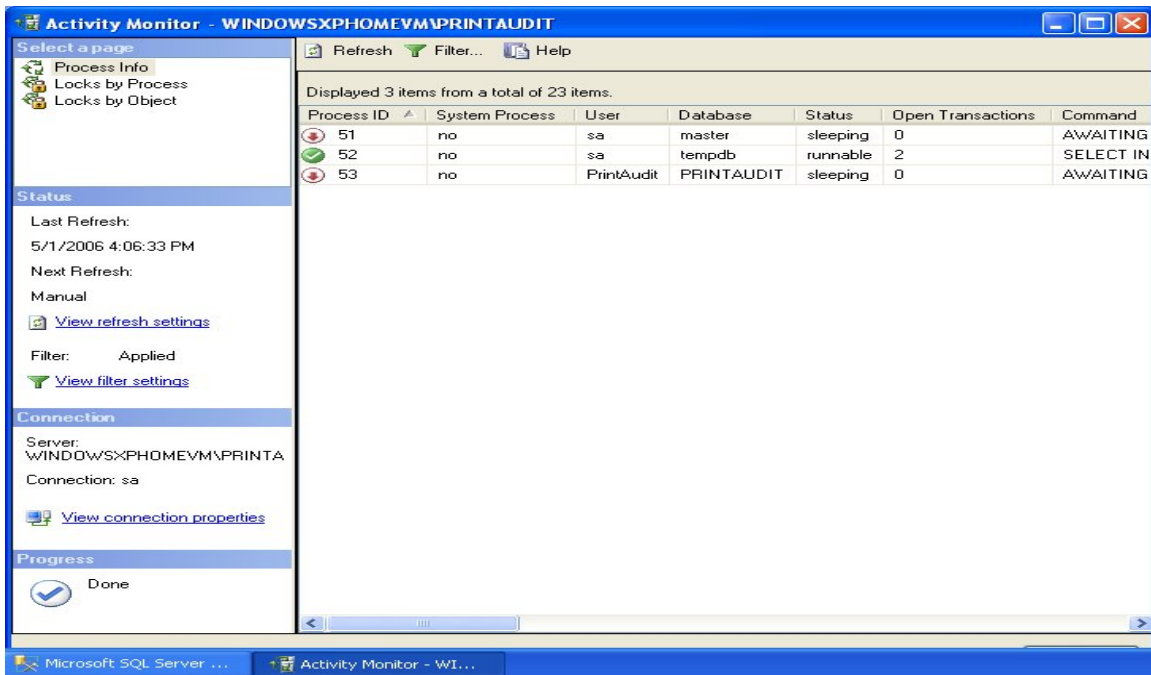
- c. Right click on the appropriate database and then choose Tasks, Detach.  
You will see the following window:



- d. If there are open connections, you may have to close them before you can continue. Follow the instructions below to do this:
- Cancel the Detach Database screen.
  - Click the plus sign beside Management.
  - Double click the Activity Monitor and you will see the screen below:



- iv. Locate the entries listed for the applicable database, PRINTAUDIT in this example.
- v. Right click the line and choose 'Kill Process'
- e. Once there are no connections open for the database, close this window

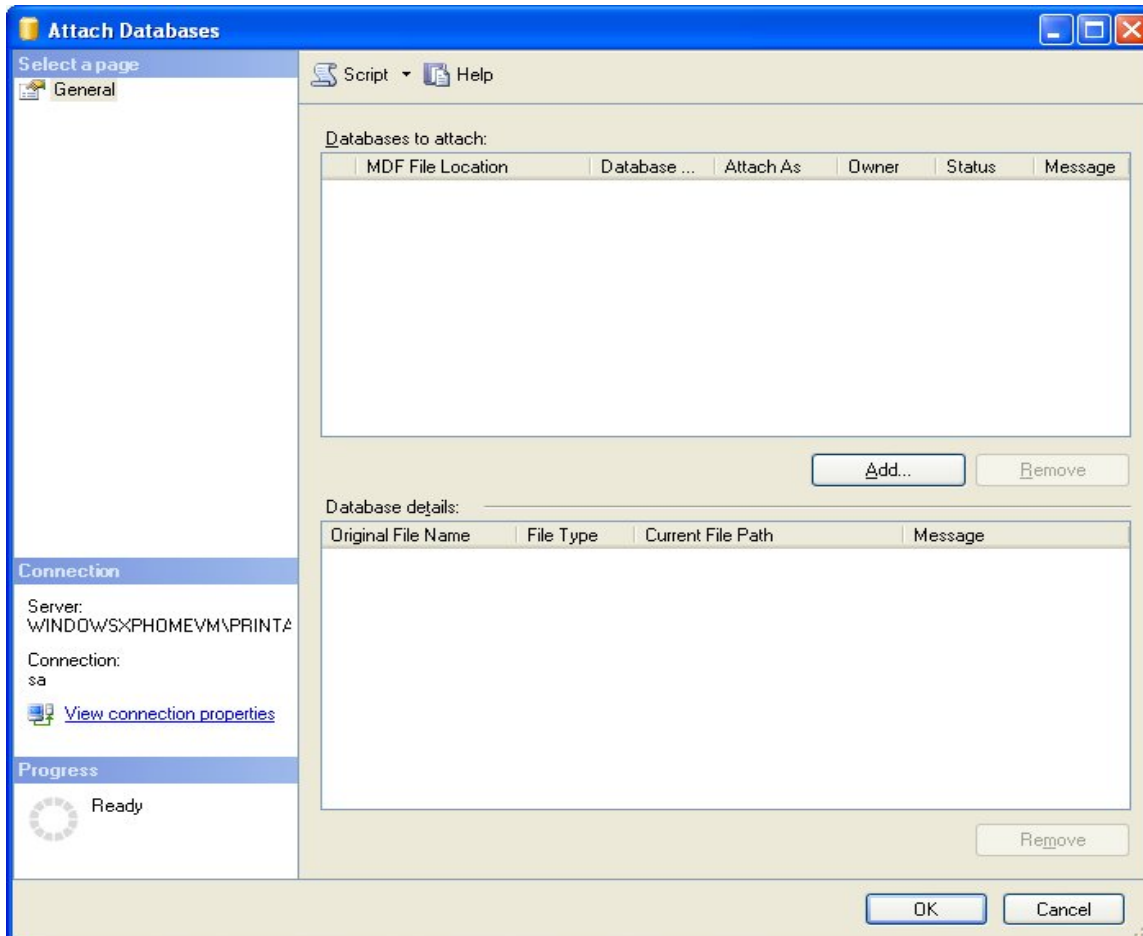


and repeat Step C above

- f. Click the OK button when you are ready to proceed.
3. There are two files created when you detach the database. By default, the database file will be named 'SQLEXPRESS.mdf' and the log file is 'SQLEXPRESS.log.ldf'. In our example it would be 'PRINTAUDIT.mdf' and 'PRINTAUDIT\_log.ldf'. These files will be located in the following location:  
C:\Program Files\Microsoft SQL Server\MSSQL.2\MSSQL\Data (Please note this location may differ on your computer.)  
- Move the files to the same folder on the new server
4. To attach a database on the new computer:
- a. Open the Microsoft SQL Server Management Studio Express program (the link to install this program is included in the SQL Server 2005 Express Installation instructions above)
  - b. Right click on 'Databases' and choose 'Attach' from the menu. You will see the screen below:



- c. Click the Add button and browse the following location to find the 'SQLEXPRESS.mdf', ('PRINTAUDIT.mdf') file and then click OK:  
C:\Program Files\Microsoft SQL Server\MSSQL.2\MSSQL\Data
  - d. Click the OK button to attach the database and associated log file.
5. Start the Database Communicator on the new server. You will have to enter the correct database information for the new server.





## Step #4 - Reconfigure the Client workstations to point to the new server

There are a few different options to reconfigure the Client workstations to point to the new server.

1. The best method would be the same method used to initially deploy the Client. You will have to create a new Network Installation package and then deploy it. Please see the following document for more information on creating a Network Installation:  
[Print Audit 6 Network Installation Guide](#)
2. You can also use the Print Audit 6 Client Status and Deployment tool to re-point the Client workstations.
  - a. Go to the Start Menu, Programs, Print Audit Inc., Advanced Tools and choose Client Status and Deployment.
  - b. Click the Query button and enter the domain or workgroup name to query the domain.
  - c. You can now select multiple workstations and choose 'Change Database Communicator Location' from the Push menu.
  - d. Enter the computer name or IP address of the new server and then choose Update.
  - e. Either reboot the workstation or have the user logoff and log back in for the change to take effect.
3. The last option is to update each Client manually.
  - a. Go to a Client workstation.
  - b. Open My Computer
  - c. Browse to C:\Program Files\Print Audit Inc\Print Audit 6\Client and double click the 'PA6CCUTL.EXE' file.
  - d. Enter the computer name or IP address of the new server and then choose OK.
  - e. Either reboot the workstation or have the user logoff and log back in for the change to take effect.