



## Print Audit 6 Client Only Installation Guide

### **IMPORTANT: READ THIS BEFORE PERFORMING A PRINT AUDIT 6 INSTALLATION**

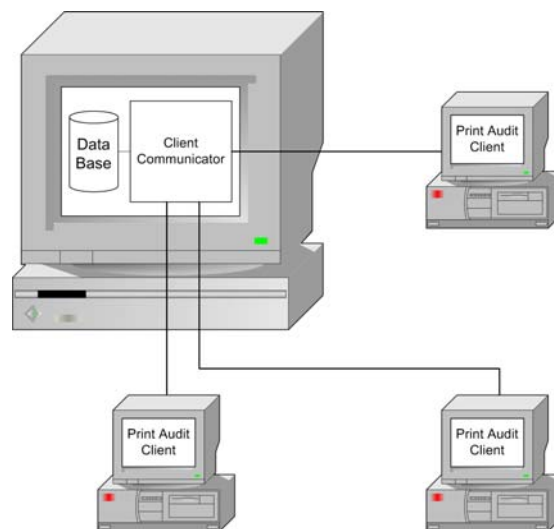
Print Audit 6 is a desktop application that you must install on every computer where you want to track printing. Users installing Print Audit must have Administrator rights, or you must use third-party tools that can install software in a locked down environment. Installing Print Audit 6 across a network requires knowledge of the network design, user rights and technologies available in your organization. Print Audit supplies various tools to aid in the network rollout of Print Audit 6 software but these tools are meant to complement your organization's current desktop software rollout procedures. If you do not have an established way to rollout software in your organization then we strongly advise that you develop a software rollout plan for all desktop software before attempting to roll out Print Audit 6 software.

### **Overview**

Print Audit 6 allows you to install its components quickly and easily on a single machine or across your entire network. This document includes step by step instructions needed to install Print Audit 6.

### **Key Concepts**

Print Audit 6 print tracking is split into three main components; Client, Database Communicator and Database.





Print Audit 6 tracks print jobs directly from the computer where the print job is issued. It does so by having a Client component installed on each computer. The Client component communicates print job information with a Database Communicator component, which is usually installed on the same computer as the database. The Database Communicator receives print job information from the Client component on workstations and saves it to the database.

Reporting is achieved by connecting reporting tools directly to the database and retrieving stored information from the database.

## Installation Types

The Print Audit 6 installer makes the following installation types available:

**Trial Install** – recommended install during software evaluation on a limited number of computers or when computers are not on a network. This install will create a Microsoft Access database, and install all tracking and reporting tools on a single computer.

**Step by Step Walkthrough** – recommended for advanced users or installations where multiple computers will be storing information in a shared database.

**Client Only Install** – recommended for adding extra computers to an existing Print Audit 6 installation. This setting only installs the Client component on a single computer. You must have an existing Print Audit 6 database and Database Communicator running on the network before selecting this type of installation.

**Create a Network Install** – recommended for advanced users who wish to prepare Print Audit 6 for network deployment. This setting does not install any active code on the machine; it creates a network installation folder which contains files necessary for network deployment. You will be taken through a wizard interface to select options that will take effect on machines deployed using this installation configuration.



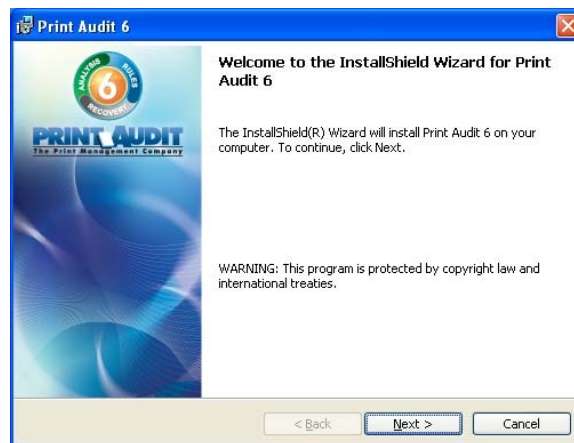
## Installation Type: Client Only

Print Audit 6 setup can be downloaded from our website at [www.printaudit.com](http://www.printaudit.com). Our website always includes the latest version of the setup program.

The Client Only Install method is meant for tracking additional computers. This means the database has already been created and there is a computer running the Database Communicator. If you have not created a database or do not have a computer that is running the Database Communicator component, please see the Trial Install or Step by Step Install documentation before proceeding with the Client Only Install.

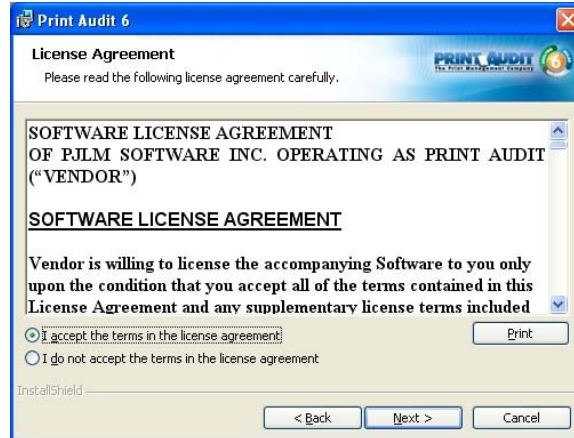
## Step 1: Greeting

Our new installer welcomes you to Print Audit 6. Press “Next” to continue. You can abort the installation process at any point by selecting “Cancel”.



## Step 2: License Agreement

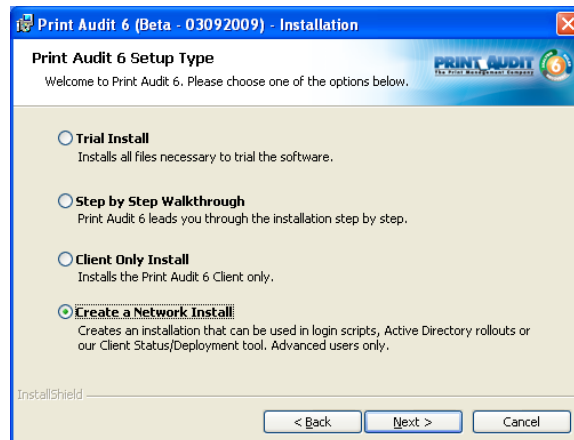
This screen will present you with the Print Audit 6 End User License Agreement. You will need to select “I accept the terms in the license agreement” before the setup process can continue. Press “Next” once you have read the agreement and selected the appropriate checkbox.



### Step 3: Installation Type

Select the "Client Only" installation type. Press "Next" to continue.

If you wish to install select components or prepare network installation files, please see the appropriate sections for the type of install you are interested in.





## Step 4: Database Communicator Settings

Print Audit 6 uses a Database Communicator component to read/write to the database. The Client component you are now installing communicates with the Database Communicator. In order for the communication to be successful the Client component needs to know where the Database Communicator is located. We provide this information by entering two fields of information; location and port.

The location is the name of the machine on which the Database Communicator has been installed. Enter the name of the machine where you installed the Database Communicator (likely to be the computer that has the database).

The port field tells the Client what port number to use to connect to the Database Communicator. Enter the port number that you selected during the Database Communicator installation. If you do not know the port number, the default value of 17520 will work in most situations.

Press “Next” to continue.

Print Audit 6 - Database Communicator Settings

Please enter the Database Communicator settings.

Enter the name of the computer running the Database Communicator as well as the port it is listening on. If you have not installed a Database Communicator yet, please do so before you install the Client.

Location: VM-2005-XPH

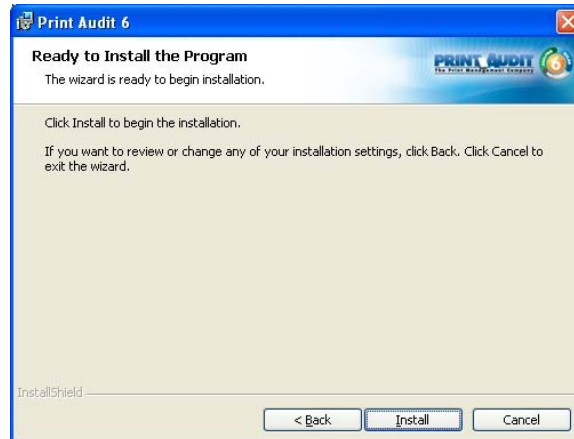
Port: 17520

InstallShield

< Back Next > Cancel

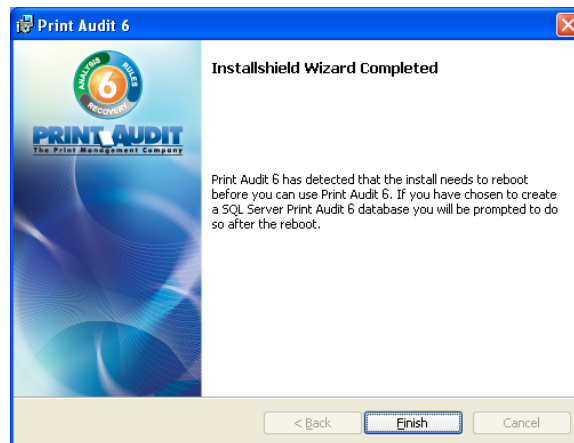
## Step 5: Ready to Install

Print Audit 6 now has enough information to proceed with installation. If you wish to make changes to any previously entered settings, use the “Back” button to return to the appropriate screen, otherwise press the “Install” button to install the Print Audit 6 Client now.



## Step 6: Reboot

In some circumstances, if system files need to be updated during installation, Print Audit 6 may need to reboot the computer. If this is the case, you will see the screen below. Save all your work and then press “Finish” to allow the computer to reboot.



Congratulations! You are now ready to start tracking your print jobs with Print Audit 6.