



Print Audit 6 Network Installation Guide

IMPORTANT: READ THIS BEFORE PERFORMING A PRINT AUDIT 6 INSTALLATION

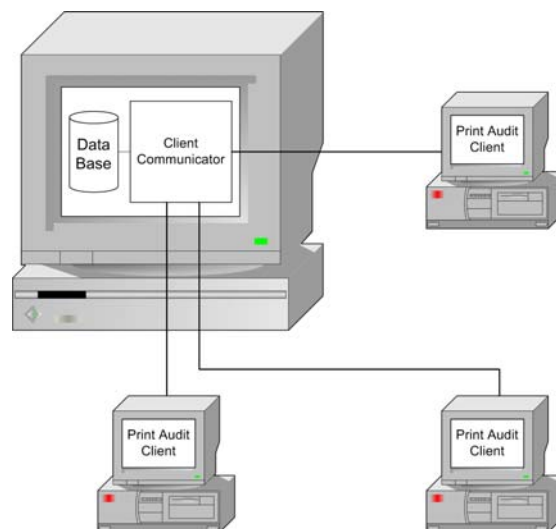
Print Audit 6 is a desktop application that you must install on every computer where you want to track printing. Users installing Print Audit must have Administrator rights, or you must use third-party tools that can install software in a locked down environment. Installing Print Audit 6 across a network requires knowledge of the network design, user rights and technologies available in your organization. Print Audit supplies various tools to aid in the network rollout of Print Audit 6 software but these tools are meant to complement your organization's current desktop software rollout procedures. If you do not have an established way to rollout software in your organization then we strongly advise that you develop a software rollout plan for all desktop software before attempting to roll out Print Audit 6 software.

Overview

Print Audit 6 allows you to install its components quickly and easily on a single machine or across your entire network. This document includes step by step instructions needed to install Print Audit 6.

Key Concepts

Print Audit 6 print tracking is split into three main components; Client, Database Communicator and Database.





Print Audit 6 tracks print jobs directly from the computer where the print job is issued. It does so by having a Client component installed on each computer. The Client component communicates print job information with a Database Communicator component, which is usually installed on the same computer as the database. The Database Communicator receives print job information from the Client component on workstations and saves it to the database.

Reporting works by connecting reporting tools directly to the database and retrieving stored information from the database.

Installation Types

The Print Audit 6 installer makes the following installation types available:

Trial Install – recommended install during software evaluation on a limited number of computers or when computers are not on a network. This install will create a Microsoft Access database, and install all tracking and reporting tools on a single computer.

Step by Step Walkthrough – recommended for advanced users or installations where multiple computers will be storing information in a shared database.

Client Only Install – recommended for adding extra computers to an existing Print Audit 6 installation. This setting only installs the Client component on a single computer. You must have an existing Print Audit 6 database and Database Communicator running on the network before selecting this type of installation.

Create a Network Install – recommended for advanced users who wish to prepare Print Audit 6 for network deployment. This setting does not install any active code on the machine; it creates a network installation folder which contains files necessary for network deployment. You will be taken through a wizard interface to select options that will take effect on machines deployed using this installation configuration.



Installation Type: Create a Network Install

Print Audit 6 setup can be downloaded from our website at www.printaudit.com. Our website always includes the latest version of the setup program.

The Create a Network Install method is meant to prepare Print Audit 6 for mass deployment. We suggest running this type of install only after the database has been created and the Database Communicator is running on one of the computers.

If you have not created a database or do not have a computer that is running the Database Communicator component, please see the Trial Install or Step by Step Install documentation before creating a network installation folder.

The result of going through “Create a Network Install” will be a folder with batch files useful for deploying using login scripts, MSI files that can be used with Active Directory deployment using group policy, a CFG file that can be used to modify which components are installed and a copy of the installer.

Step 1: Greeting

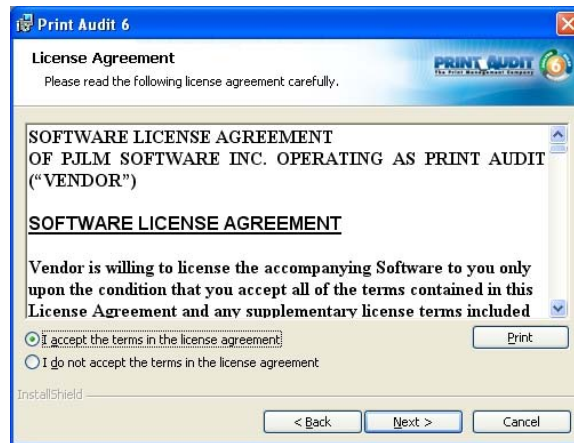
Our new installer welcomes you to Print Audit 6. Press “Next” to continue. You can abort the installation process at any point by selecting “Cancel”.





Step 2: License Agreement

This screen will present you with the Print Audit 6 End User License Agreement. You will need to select “I accept the terms in the license agreement” before the setup process can continue. Press “Next” once you have read the agreement and selected the appropriate checkbox.



Step 3: Installation Type

Select the “Create a Network Install” installation type. Press “Next” to continue.

If you wish to install select components or perform a Trial Install, please see the appropriate sections for the type of install you are interested in.

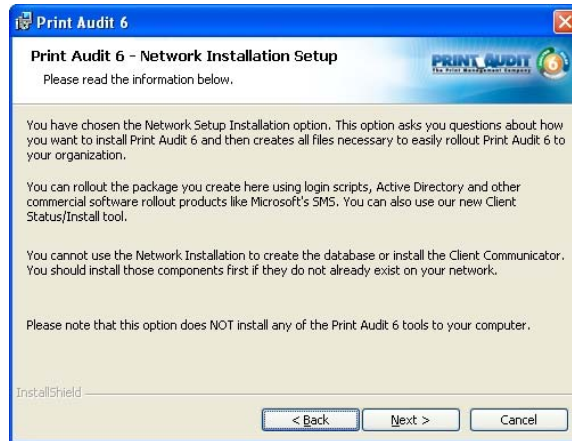




Step 4: Network Installation Setup

The following screen explains what to expect from this type of installation.

Press “Next” to proceed with creating a network installation folder.



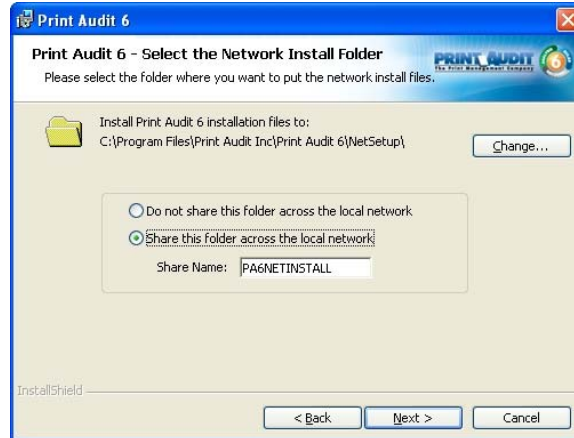
Step 5: Select Network Install Folder Location

Files created during the “Create a Network Install” process must be placed into a folder. The window below will allow you specify where this folder is created.

Additionally, when using login scripts to deploy, this folder will need to be shared across the network. The Print Audit 6 installer gives you the chance to automatically create a network share.

Select “Do not share this folder across the local network” if you do not wish to automatically share this folder, or “Share the folder across the local network” if you are planning on using login scripts to deploy Print Audit 6. If you will be sharing out this folder, enter the desired name for the network share in the “Share Name” field.

Press “Next” to continue.



Step 5: Select Database Type

Print Audit 6 can use two types of databases; Microsoft SQL Server (6.5, 7.0 and 2000 or MSDE) or Microsoft Access. Microsoft Access is easier to configure while SQL Server and MSDE are more robust and handle large user bases better. Microsoft Access does not need to be installed in order to use Microsoft Access for database storage.

Select the type of database you wish to use and press “Next” to continue.



Step 6: Select Components

In this step, select which components you wish to have installed on all machines that this network installation will be used to deploy to. By default, the Client component will be selected. The Client component must be installed on every machine you wish to track.



The “Administration” and “Job Editing and Reporting” components can be pushed out to the entire network; however we highly recommend they only be installed on a few machines.

Select components you wish to install and press “Next” to continue.



Step 7: Database Communicator Connection Settings

The Print Audit 6 Client component needs to connect to the Database Communicator in order to communicate with the database. This is done by entering the location and port of the Database Communicator.

Enter the name or IP address of the machine running the Database Communicator in the “Location” field.

Enter the port number on which the Database Communicator is listening on in the “port” field.

Press “Next” to continue





Step 8: Advanced Settings

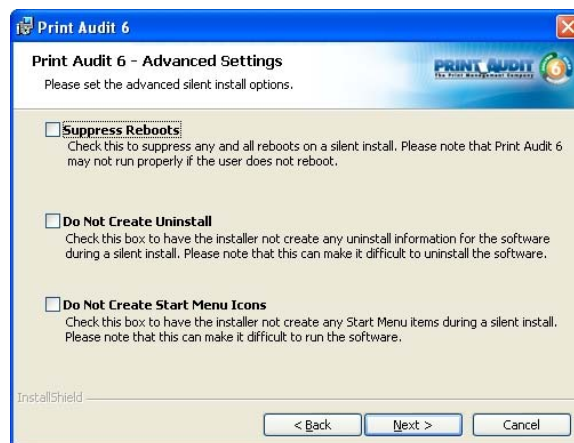
There are two advanced settings that can be set during network installation.

“Suppress Reboots” – In certain environments, it is desired not to show any signs of new software being installed. In those kinds of environments, the Print Audit 6 installer can be configured not to reboot upon completion (even if a reboot is requested by the operating system). Notice that Print Audit 6 may not function correctly until computers deployed to are rebooted.

“Do Not Create Uninstall” – If you do not wish to see an uninstall entry for Print Audit 6 in the Windows Control Panel under Add/Remove Programs, check this setting. Notice that this will make it more difficult to uninstall the software by both users and network administrators.

“Do Not Create Start Menu Icons” – In an environment where you wish to have very little indication that Print Audit 6 is installed, turning this option on will prevent Print Audit 6 from creating start menu items. Note that this will make it more difficult to launch Print Audit 6 components such as Help.

Select desired options and press the “Next” button to continue.





Step 9: Ready to Install

Print Audit 6 now has enough information to proceed with creation of the network install folder. If you wish to make changes to any previously entered settings, you can use the “Back” button to return to the appropriate screen. If you are happy with your selections, press the “Install” button to create the network install folder for Print Audit 6.



Step 10: Installation Complete

When Print Audit 6 finishes creating the network install folder, you will be presented with the InstallShield Wizard Completed window. Press “Finish” to complete the installation.



Congratulations! You have successfully created a network installation folder for Print Audit 6. The contents of this folder will help you deploy Print Audit 6 using login scripts, Active Directory and many more mass deployment tools.