



Print Audit 6 Trial Installation Guide

IMPORTANT: READ THIS BEFORE PERFORMING A PRINT AUDIT 6 INSTALLATION

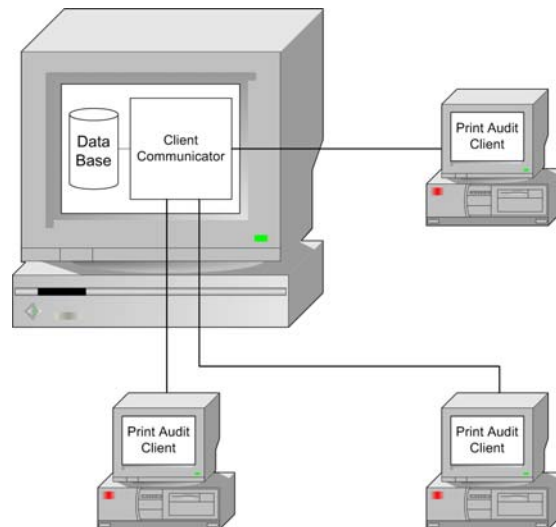
Print Audit 6 is a desktop application that you must install on every computer where you want to track printing. Users installing Print Audit must have Administrator rights, or you must use third-party tools that can install software in a locked down environment. Installing Print Audit 6 across a network requires knowledge of the network design, user rights and technologies available in your organization. Print Audit supplies various tools to aid in the network rollout of Print Audit 6 software but these tools are meant to complement your organization's current desktop software rollout procedures. If you do not have an established way to rollout software in your organization then we strongly advise that you develop a software rollout plan for all desktop software before attempting to roll out Print Audit 6 software.

Overview

Print Audit 6 allows you to install its components quickly and easily on a single machine or across your entire network. This document includes step by step instructions needed to install Print Audit 6.

Key Concepts

Print Audit 6 print tracking is split into three main components; Client, Database Communicator and Database.





Print Audit 6 tracks print jobs directly from the computer where the print job is issued. It does so by having a Client component installed on each computer. The Client component communicates print job information with a Database Communicator component, which is usually installed on the same computer as the database. The Database Communicator receives print job information from the Client component on workstations and saves it to the database.

Reporting works by connecting reporting tools directly to the database and retrieving stored information from the database.

Installation Types

The Print Audit 6 installer makes the following installation types available:

Trial Install – recommended install during software evaluation on a limited number of computers or when computers are not on a network. This install will create a Microsoft Access database, and install all tracking and reporting tools on a single computer.

Step by Step Walkthrough – recommended for advanced users or installations where multiple computers will be storing information in a shared database.

Client Only Install – recommended for adding extra computers to an existing Print Audit 6 installation. This setting only installs the Client component on a single computer. You must have an existing Print Audit 6 database and Database Communicator running on the network before selecting this type of installation.

Create a Network Install – recommended for advanced users who wish to prepare Print Audit 6 for network deployment. This setting does not install any active code on the machine; it creates a network installation folder which contains files necessary for network deployment. You will be taken through a wizard interface to select options that will take effect on machines deployed using this installation configuration.



Installation Type: Trial Install

Print Audit 6 setup can be downloaded from our website at www.printaudit.com. Our website always includes the latest version of the setup program.

The Trial Install method is meant for installation to a single computer, computers not connected to a network or for users wanting to evaluate the software on their local PC.

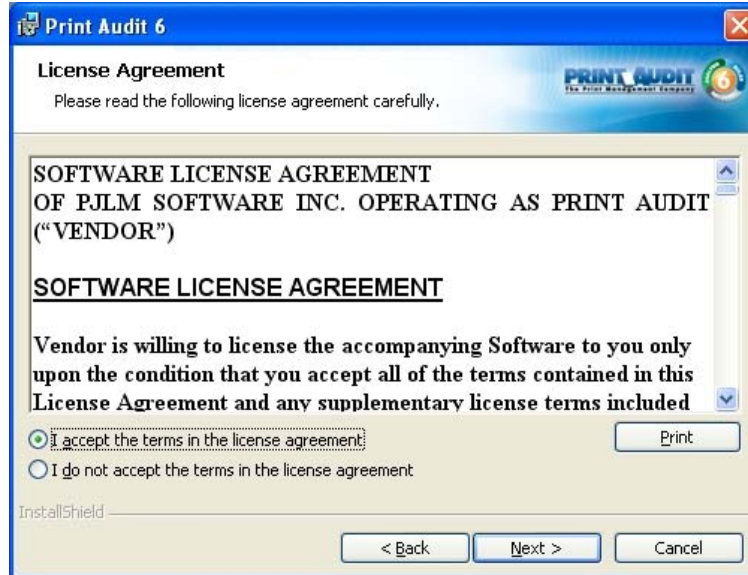
Step 1: Greeting

Our new installer welcomes you to Print Audit 6. Press “Next” to continue. You can abort the installation process at any point by selecting “Cancel”.



Step 2: License Agreement

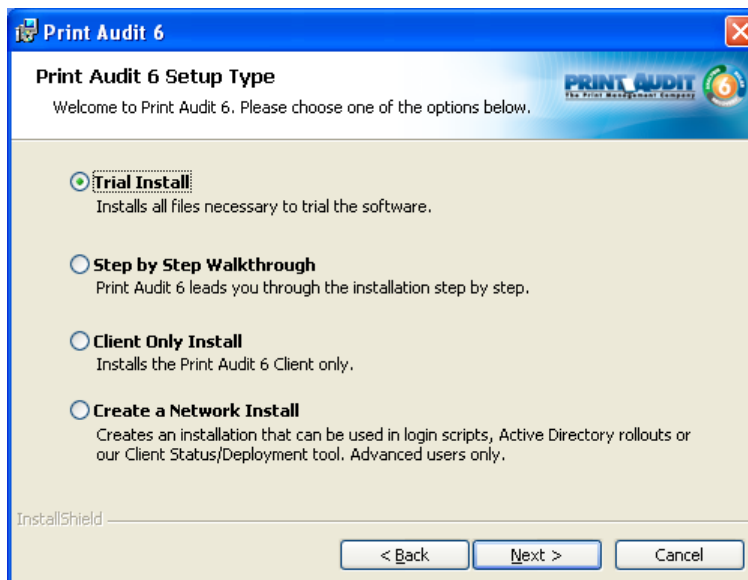
This screen will present you with the Print Audit 6 End User License Agreement. You will need to select “I accept the terms in the license agreement” before the setup process can continue. Press “Next” once you have read the agreement and selected the appropriate checkbox.



Step 3: Installation Type

Select the "Trial Install" installation type. Press "Next" to continue.

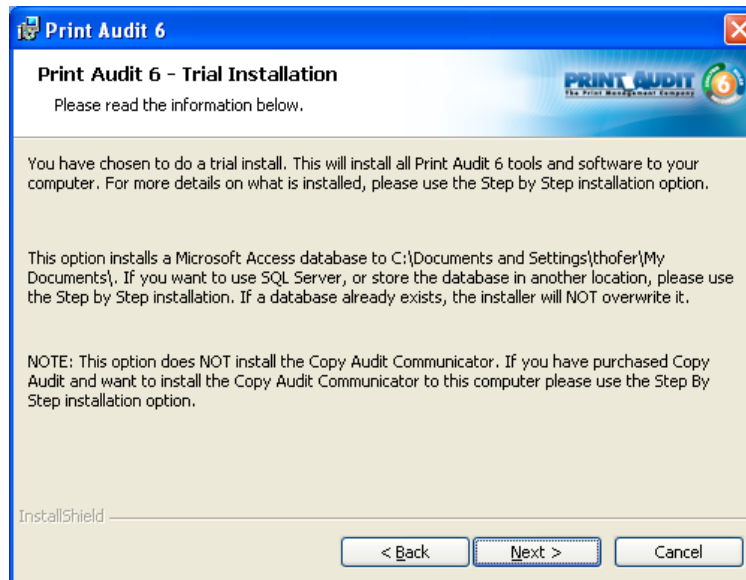
If you wish to install select components or prepare network installation files, please see the appropriate sections for the type of install you are interested in.





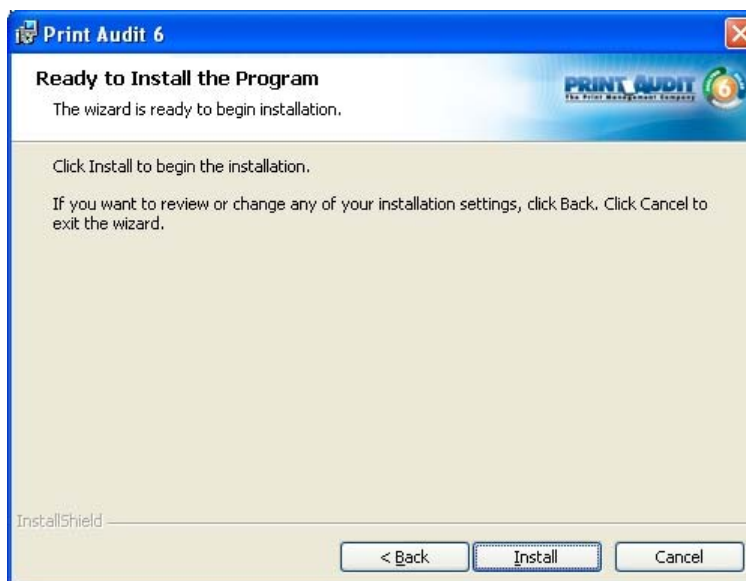
Step 4: Installation Type Confirmation

Print Audit 6 will display a summary of options that have been defaulted to during the Trial Install process. Press “Next” to continue the installation.



Step 5: Ready to Install

Print Audit 6 now has enough information to install selected components. If you wish to make changes to installation settings, click the “Back” button. Otherwise, press “Install” to proceed with the installation of Print Audit 6.





Step 6: Installation Completed

A screen indicating the InstallShield Wizard Completed will be displayed once the installation has completed. Press "Finish" to exit the installation wizard.



Congratulations! You are now ready to start tracking your print jobs with Print Audit 6.