
Infinite Device Management

Tracking Locally Connected Devices - IDM/Print Audit 6

Version: 22

Date: 05-Dec-2018 10:37



Please Note: This document is intended for use with Local Device Tracking using Print Audit 6. Please refer to [this document](#) if using Infinite User Management with IDM for tracking local devices.

The Information Collection Engine (ICE) can track print volumes on all types of devices, whether they are networked or not. Devices that do not support SNMP or which are not connected directly to the network are called Local Devices. In most cases, Local Devices connect to a computer using USB or parallel port. They may or may not be shared on the network, but they are not directly connected to it.

The ICE does not automatically track Local Devices by default. The ICE obtains this information by integrating with another software product, Print Audit 6. Print Audit 6 tracks every single printing device at a customer site, including Local Devices and special types of printers like PDF writers.

Overview of Local Printer Tracking

Because no MIB information is available on local printers, there is no information for Infinite Device Management to collect from these devices regarding supplies levels, error messages, or device status. Using Print Audit 6 to track local print devices will provide Infinite Device Management only with a page count for these devices.

Information regarding Location, Serial Number, and Life Count, will need to be manually entered, as outlined later in this document.

Enabling Local Device Tracking

There are three steps required to enable Local Device Tracking for a customer's site:

STEP 1: INSTALL AND CONFIGURE PRINT AUDIT 6

- The Print Audit 6 client must be installed on every workstation from which you wish to track local printing
- Print Audit 6 installation guides are available here: [Print Audit 6 Installation Guide](#)

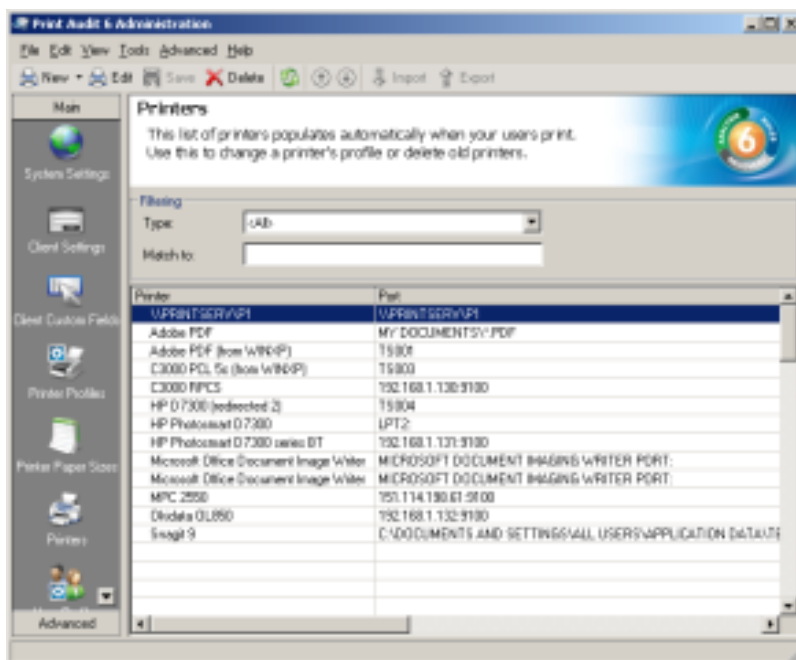
STEP 2: CONFIGURE LOCAL DEVICES IN THE PRINT AUDIT 6 ADMINISTRATOR

I. Merge Duplicate Printers

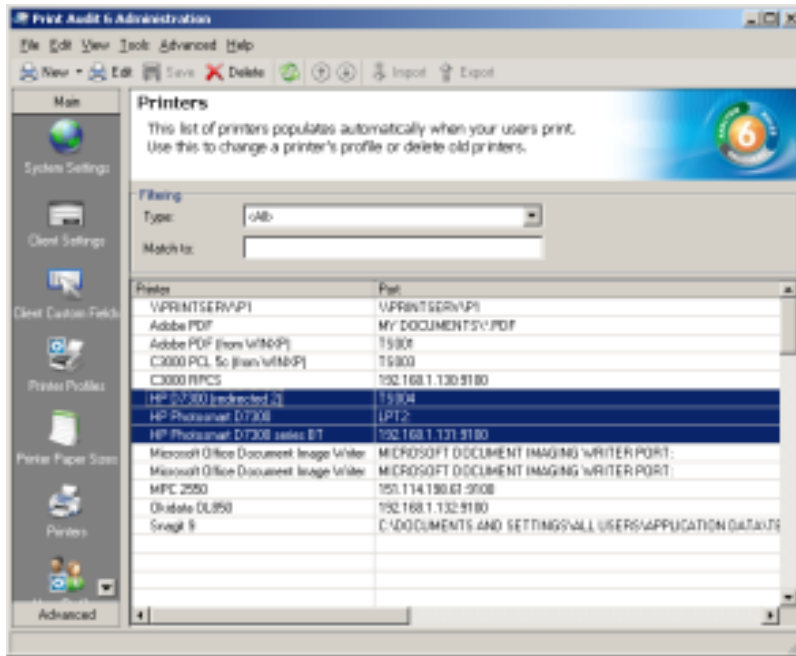
Shared local printer devices can appear multiple times in the Print Audit "Printers" list, because devices can have different names, ports, or hosts. These duplicate printers can be merged into a single printer to simplify administration on the Infinite Device Management website. Automatic device merging can be used to automatically add new matching printers to a merged print group.

Manual Printer Merging

- Open the Print Audit 6 Administrator.
- Click on the "Printers" icon to display a list of printers that have been detected.

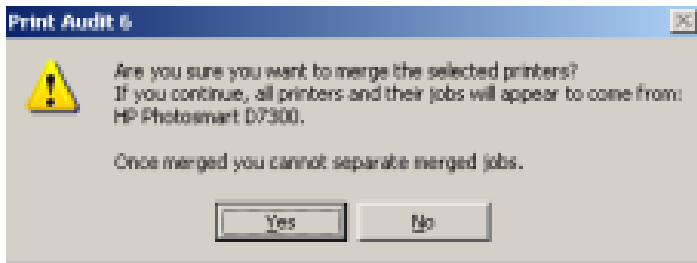


- Use CTRL-CLICK or SHIFT-CLICK to select the printer you want to merge. Note: the merged printer name will be that of the first printer selected.

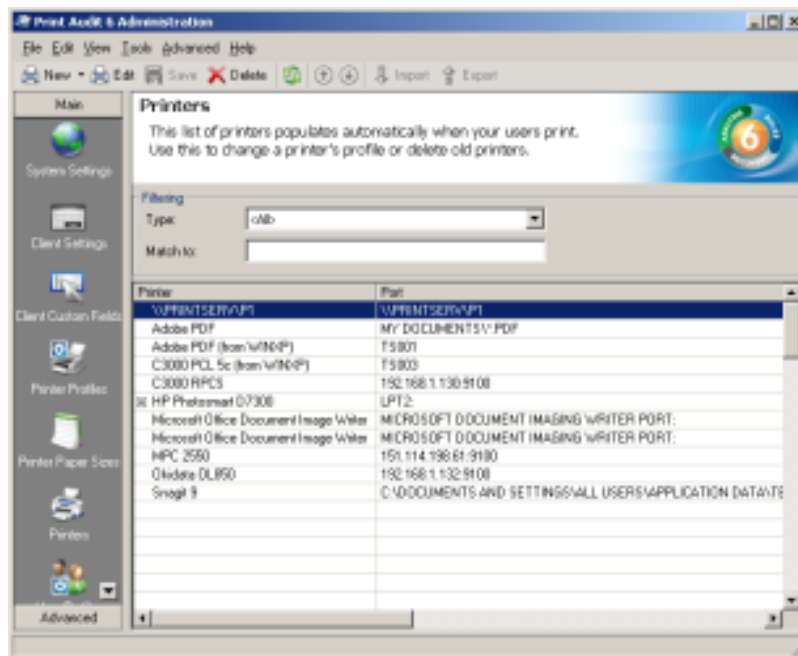


iv. Go to the top menu and select "Advanced", then "Merge Printers".

v. Confirm that you want to merge the printers by clicking the Yes button.



vi. After merging, the merged printers will be shown with a + sign. You can click the + sign to view the printers that have been merged.



Automatic Printer Merging

File based printers, such as Adobe and Microsoft XPS Document Writer, use a printer device driver to perform document conversions and will appear as local printers in Print Audit 6/Infinite Device Management. Each workstation is considered a different host; therefore, these printers appear numerous times in the Print Audit Administrator.

Note

As local printers do not have an MIB that can be queried, only minimal information regarding the device is available. You will be able to see the Model of the printer (taken from the print driver), and the Host (workstation) that it is attached to.

It is highly recommended that you print a configuration page from each local printer that you wish to track and make a note of the location. You will then be able to enter the Serial Number, Life Count, and Location by following the directions below.

- i. Open the Print Audit 6 Administrator.
- ii. Click on the "Printers" icon to display a list of printers that have been detected.
- iii. Click the *New* button on the toolbar to add a new printer for device merging purposes, or edit an existing printer.
- iv. Click the *Auto Merging* tab.

Editing Adobe PDF

Name: Adobe PDF Save

Profile: Ignore Close

Account: Paperless

Connection Model Auto Merging Advanced

Applies to: Local Network share Direct IP

Device: Adobe PDF

Host: WINXP

Port: MY DOCUMENTS*.PDF

Model: Paperless

v. Check "Local" as the "Applies to" type.

Editing Adobe PDF

Name: Adobe PDF Save

Profile: Ignore Cancel

Account: Paperless

Connection Model Auto Merging Advanced

Applies to: Local Network share Direct IP

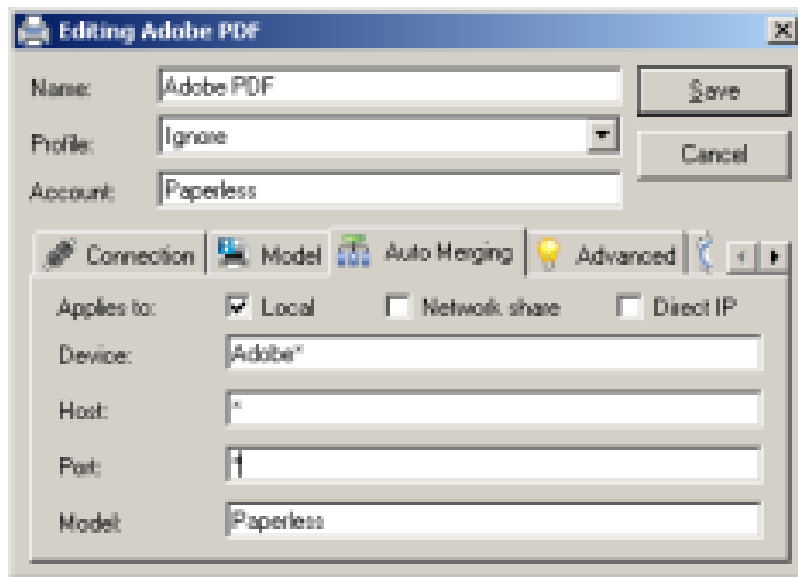
Device: Adobe PDF

Host: WINXP

Port: MY DOCUMENTS*.PDF

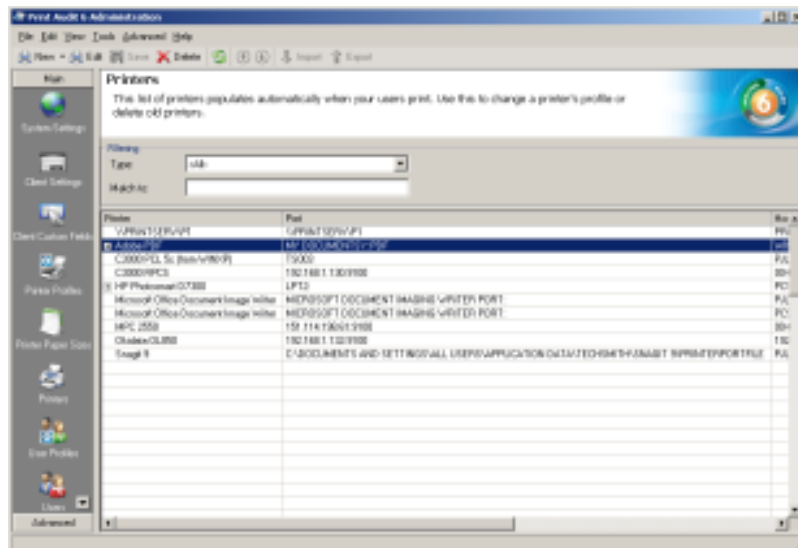
Model: Paperless

vi. Fill in the values for Device, Host, Port, and Model. For each value you can enter either an exact or wildcard match value. The wildcard character is "*" and can be placed at the beginning or end of the match, or both. To only match on device name, enter only a "*" for the Host, Port and Model.



vii. Click the Save button. A message box will appear to confirm the request to merge these devices

viii. Click the Yes button. Any existing printers in the list that match what was entered are deleted and their jobs are assigned to the printer being edited.



Note for Sharp drivers

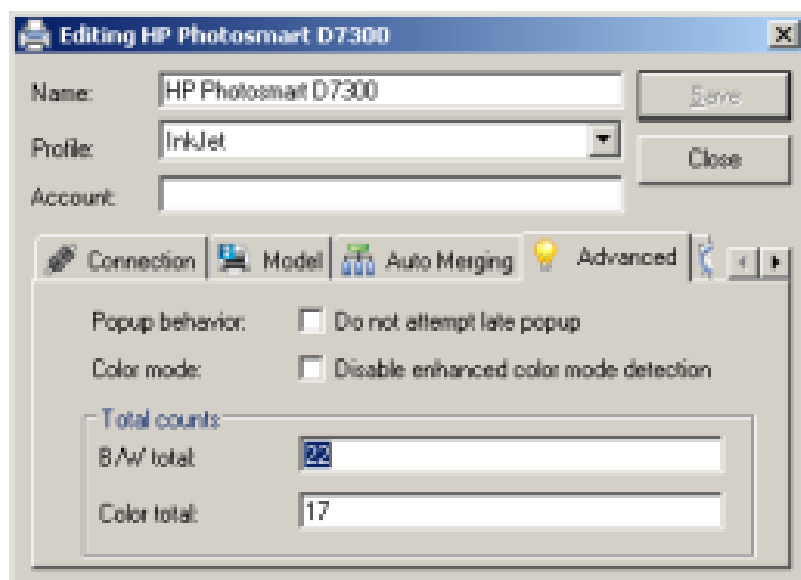
When installing a Sharp print driver to add a Sharp networked device, an LPR port is created (instead of a direct to IP). This causes each Host (workstation) with a Sharp print driver installed to appear in the Print Audit database as a local printer with that IP, which results in the appearance of duplicate printers in Print Audit reports.

To resolve this, find the first duplicate printer in the Print Audit 6 Administrator panel, and set up Automatic Merging of all subsequent printers. Put a check mark in all three options for Applies to, and use the wildcard * for Device and Host name, to match on the IP address. Afterwards, all the printers with the same IP address will show up as the single correct printer, even if other workstations add that printer using the Sharp built-in installation utility.

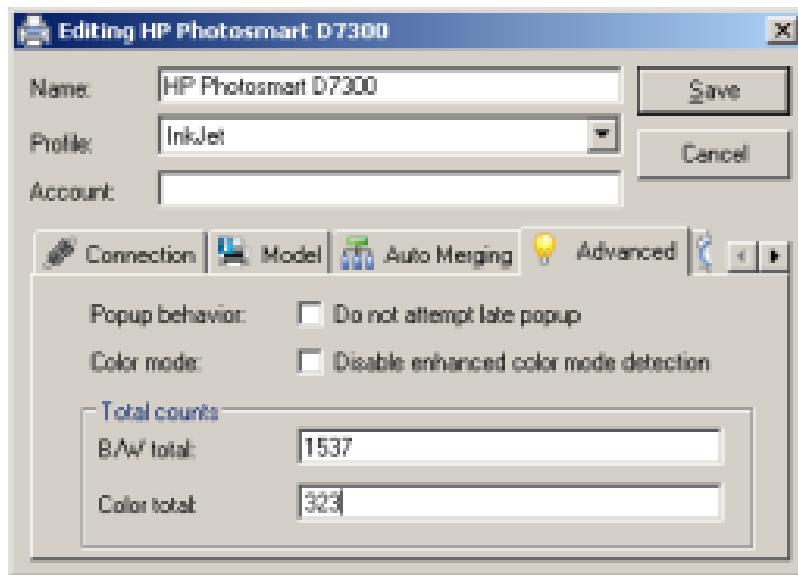
II. Add Life Counts to Locally Tracked Printers

The Print Audit Client is not able to retrieve printer life counts from local devices, therefore, the Print Audit Administrator allows you to enter the correct black and white and color page counts to these devices. These counts will give a total life count for these devices.

- i. Open the Print Audit Administrator.
- ii. Click on the "Printers" icon to display a list of printers that have been detected.
- iii. Double click on the printer.
- iv. Select the *Advanced* tab.



- v. Change the "B/W total" and "Color total" fields to reflect the number that the device is currently reporting. Only new print jobs submitted to the printer will be added to this starting value.



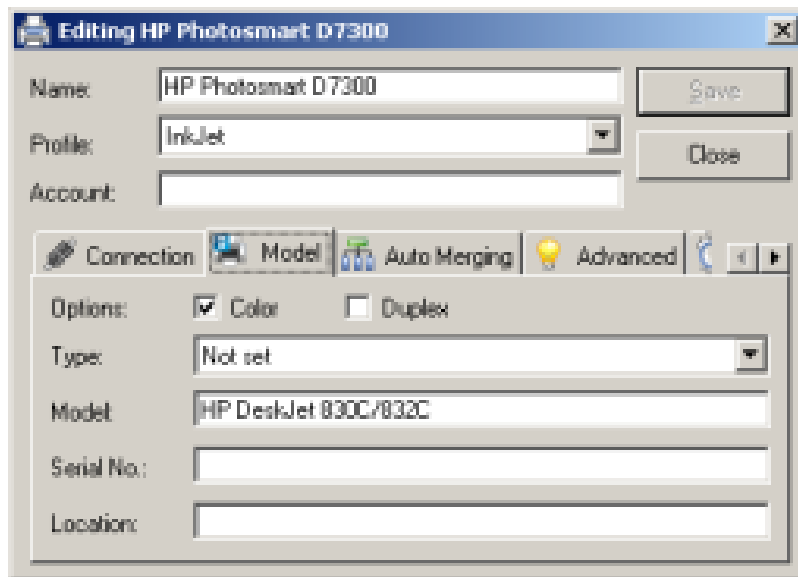
III. Add Serial Numbers and Locations to Local Devices

The Print Audit 6 Administrator allows you to manually enter the Serial Number and Location as the Print Audit 6 Client is not able to retrieve these values from local printers.

Note

Serial Number and Location fields can only be populated for local printers in the Print Audit 6 Administrator if these values are not already present in the Device Details in Infinite Device Management. New scans will not overwrite these fields in Infinite Device Management.

- i. Open the Print Audit 6 Administrator.
- ii. Click on the "Printers" icon.
- iii. Double click on a local device.
- iv. Click on the Model tab and enter the "Serial Number" and/or the "Location" values.



Editing HP Photosmart D7300

Name: HP Photosmart D7300

Profile: InkJet

Account:

Options: Color Duplex

Type: Not set

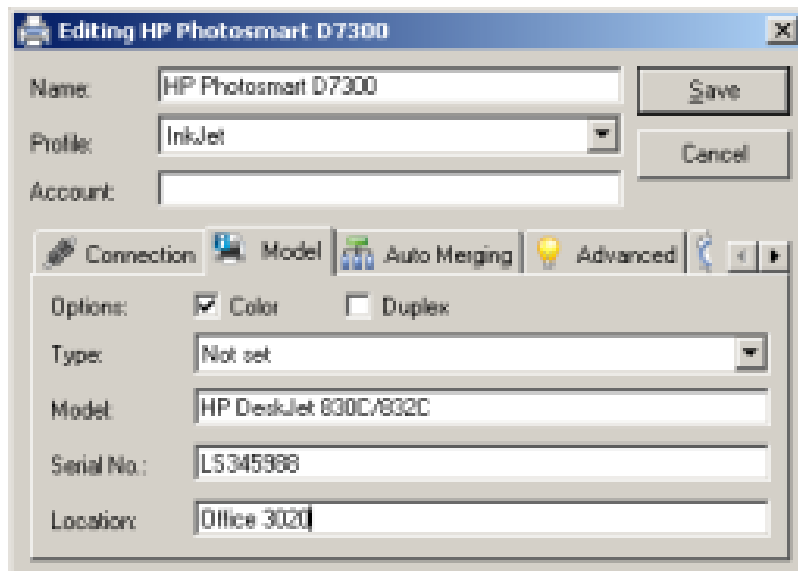
Model: HP DeskJet 830C/832C

Serial No.:

Location:

Save

Close



Editing HP Photosmart D7300

Name: HP Photosmart D7300

Profile: InkJet

Account:

Options: Color Duplex

Type: Not set

Model: HP DeskJet 830C/832C

Serial No.: L5345988

Location: Office 3020

Cancel

v. Click the Save button

STEP 3: ENABLE LOCAL DEVICE TRACKING IN THE ICE CONFIGURATION

- i. Log in the Infinite Device Management website.
- ii. Navigate to Administration, then Customers.
- iii. Locate the customer you wish to enable local tracking for and click on the name of the site.
- iv. Click on the Information Collection Engine tab.
- v. Enable local device tracking by clicking the Local Device Tracking checkbox.
- vi. Enter filter in the 'Local Device Upload Filter(s)' field.

This field is used to define a comma-delimited list of one or more filters used by the ICE to limit its uploads to specific devices. The filter(s) are compared to the port name defined for devices in the Print Audit 6 database.

- Each filter can contain a wildcard character " * " which can be inserted BEFORE and/or AFTER a specific item in the filter. For example:
 - *COM - includes all devices with port name ENDING with the characters 'COM'
 - USB* - includes all devices with port name BEGINNING with the characters 'USB'
 - * LPT * - includes all devices with port name CONTAINING the characters 'LPT'
- Entering a '*' or leaving the field empty will configure the ICE to upload ALL devices.
- For existing sites, this field will remain empty, no filtering.
- For newly created sites, this field will contain a default filter (LPT*,USB*,COM*)

vii. Scroll to the bottom of the page and click the Save button.

viii. The ICE will automatically begin tracking local devices the next time it scans devices at the site.

Note

- Printing from a computer not running the PA6 local client will not increment the printer count.
- Unprinted pages cancelled at the printer for various reasons such as jamming, will still be recorded as completed in Print Audit 6.

ix. The Print Audit 6 Database Communicator and the Information Collection Engine must be installed on the same computer.

x. Do not install the Print Audit 6 Client on your server unless there is printing being done from this machine.

xi. You must use a Microsoft SQL Database if you will be installing the Print Audit 6 Client to more than 100 computers.

xii. We suggest installing one Print Audit 6 Database Communicator for every 1000 workstations that will be running the Print Audit 6 Client software.

xiii. Before enabling Local Device Tracking in Infinite Device Management run the Print Audit 6 software for 30 days to get a complete list of all devices that users print to. Once you have this list, merge duplicate local devices in the Print Audit 6 Administrator.

Note

Ensure that the duplicate devices in the Administrator are the same physical printer. Once the devices have been merged, there is no way to unmerge the page counts.

xiv. In Infinite Device Management, set the Tracking Level of local devices to Silver.